

1

2

3

4

A

B

C

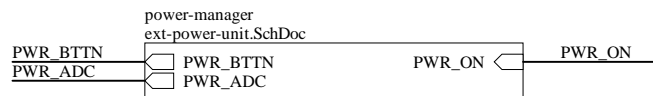
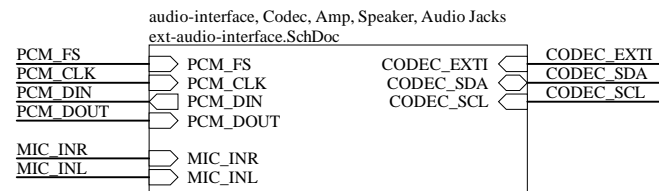
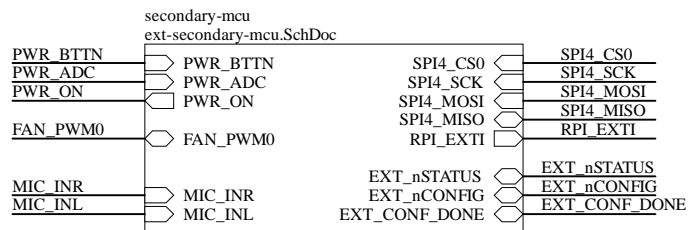
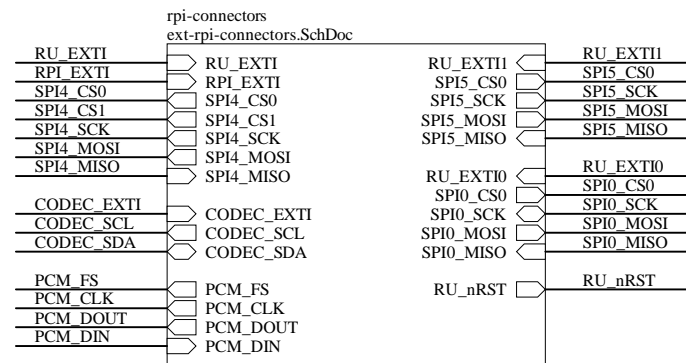
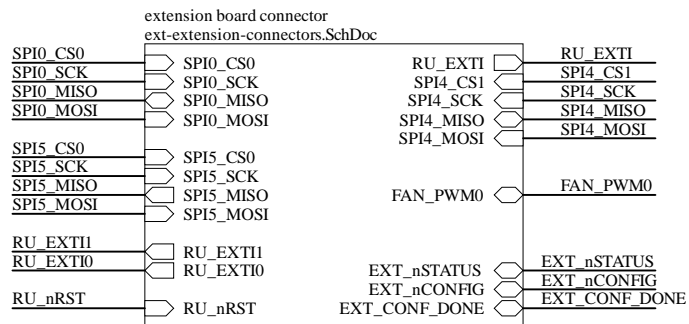
D

A

B

C

D

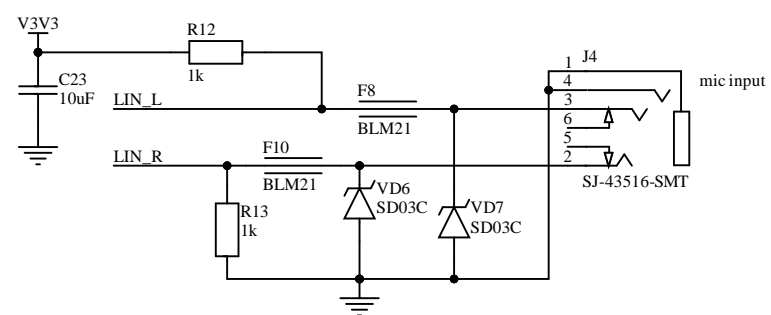
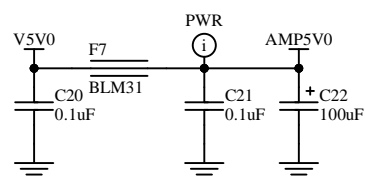
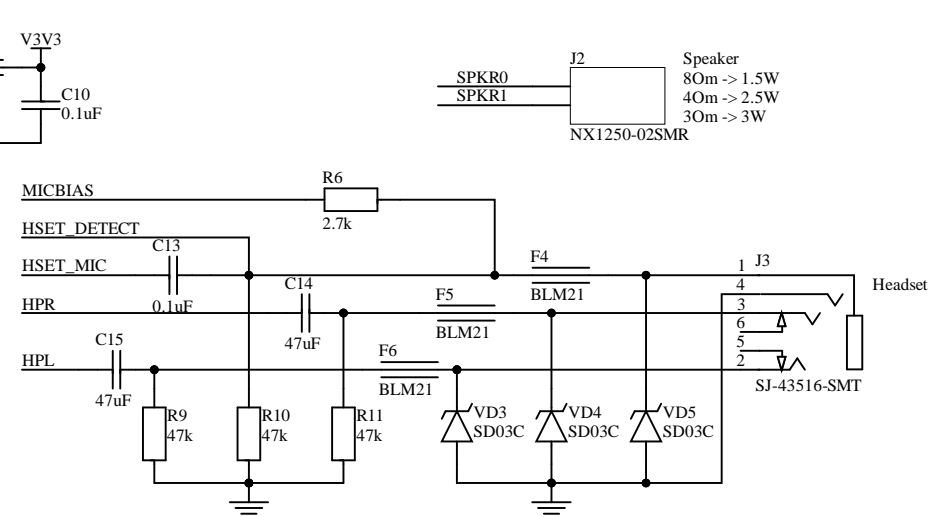
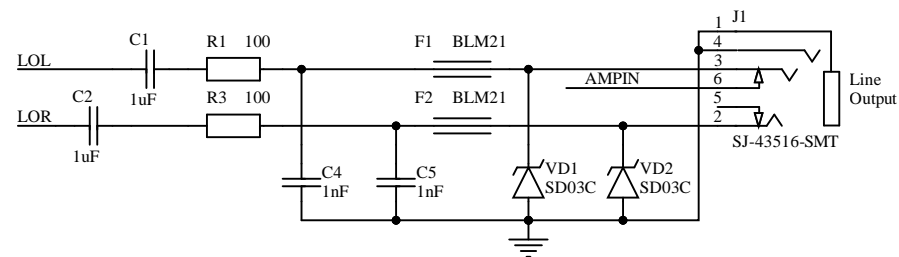


1

2

3

4



1

2

3

4

A

A

B

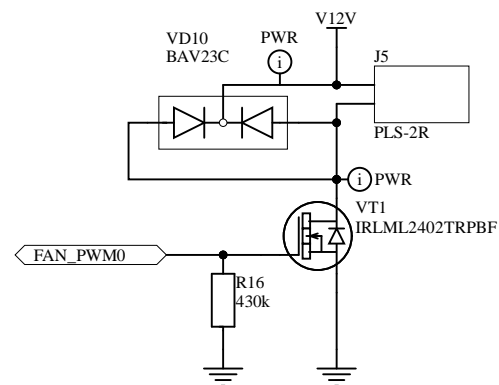
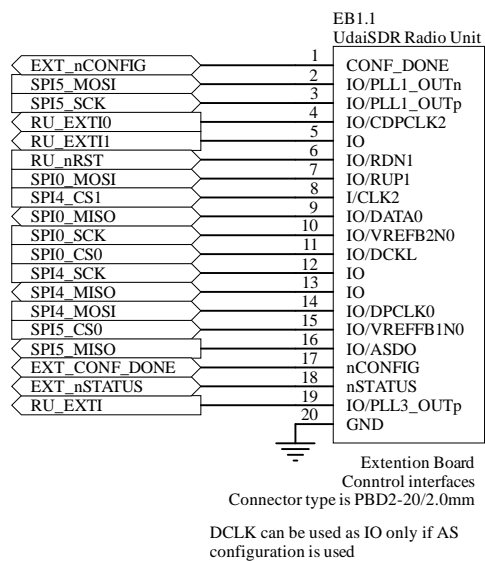
B

C

C

D

D



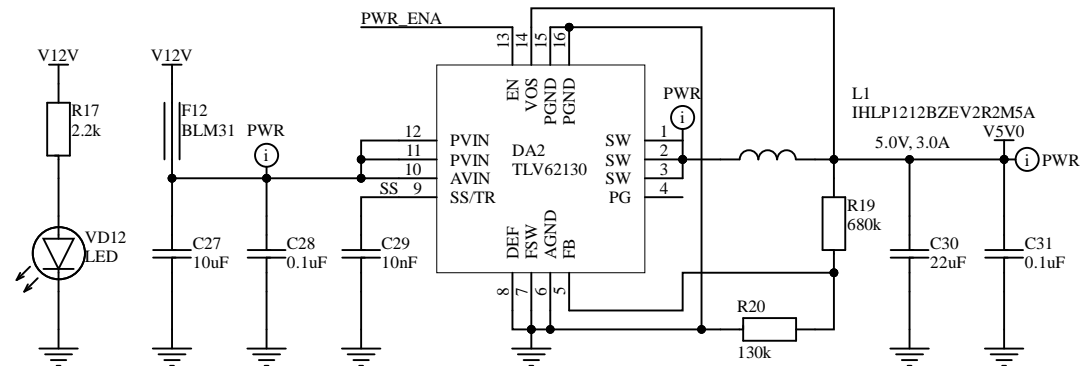
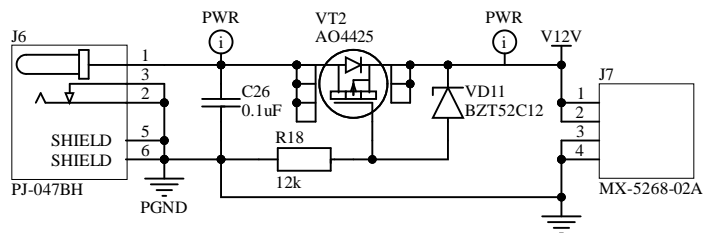
1

2

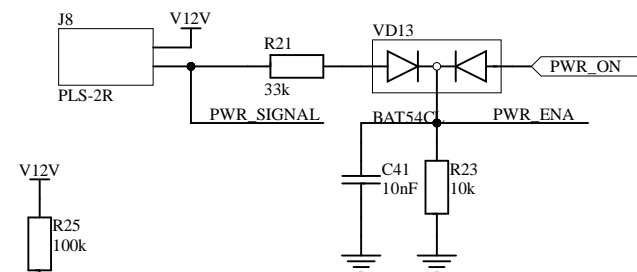
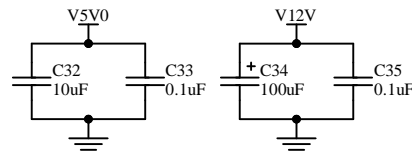
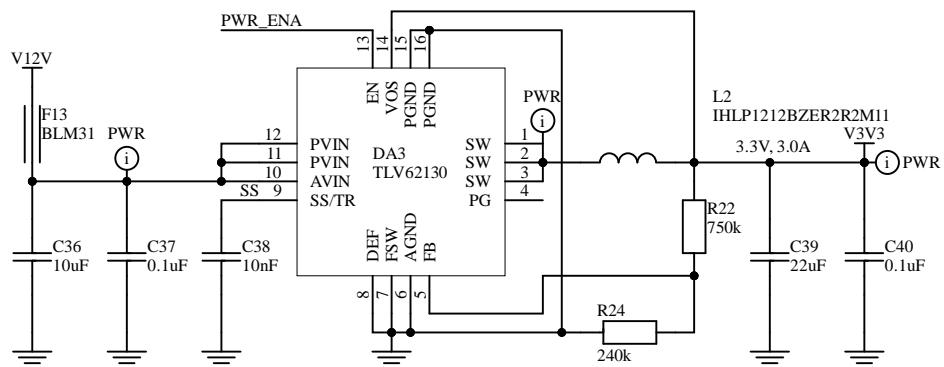
3

4

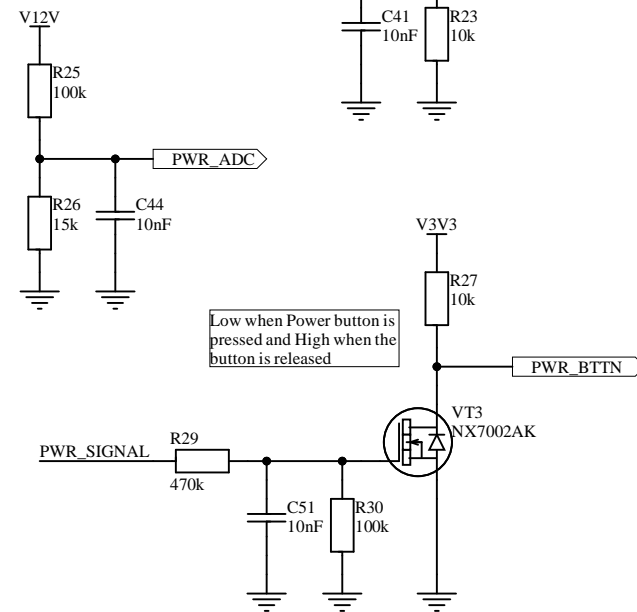
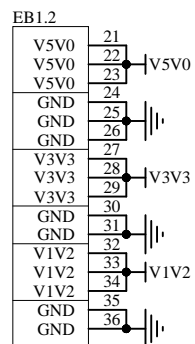
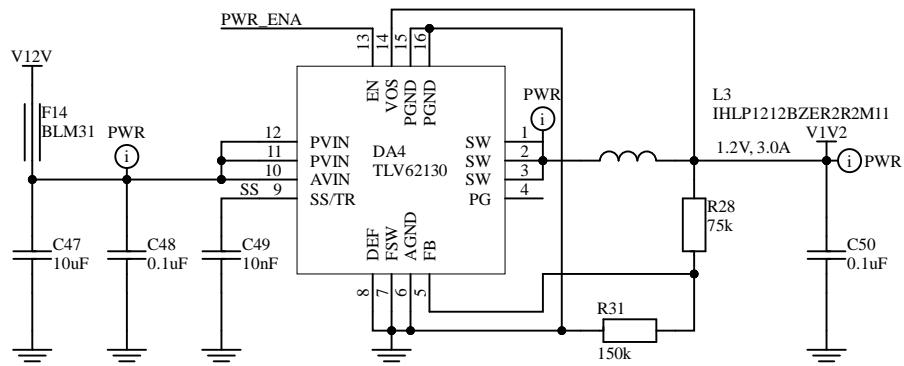
A



B



C



Extention Board
Power Connector
Connector type is PBD2-16/2.0mm

Low when Power button is
pressed and High when the
button is released

1

2

3

4

D

D

1

2

3

4

A

A

B

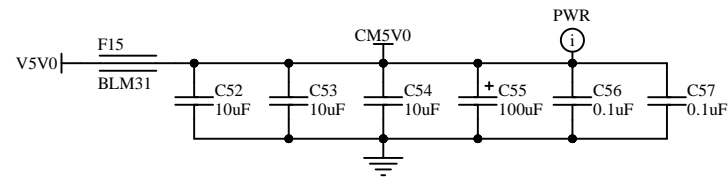
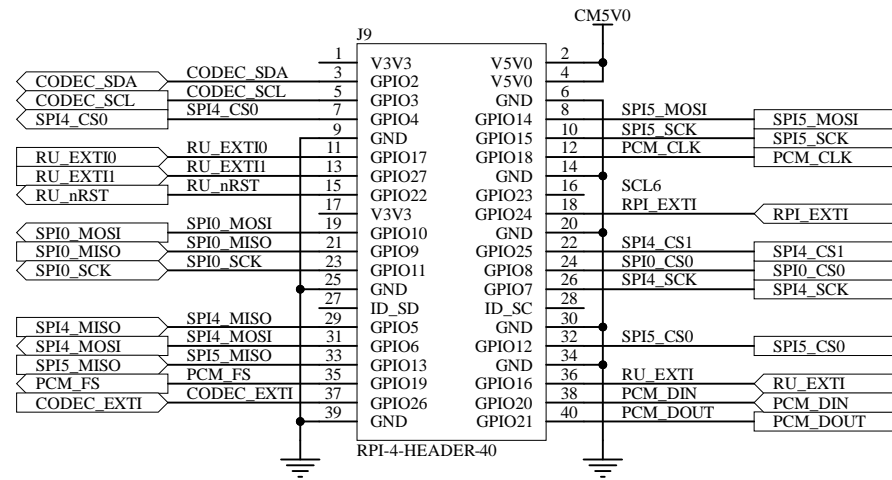
B

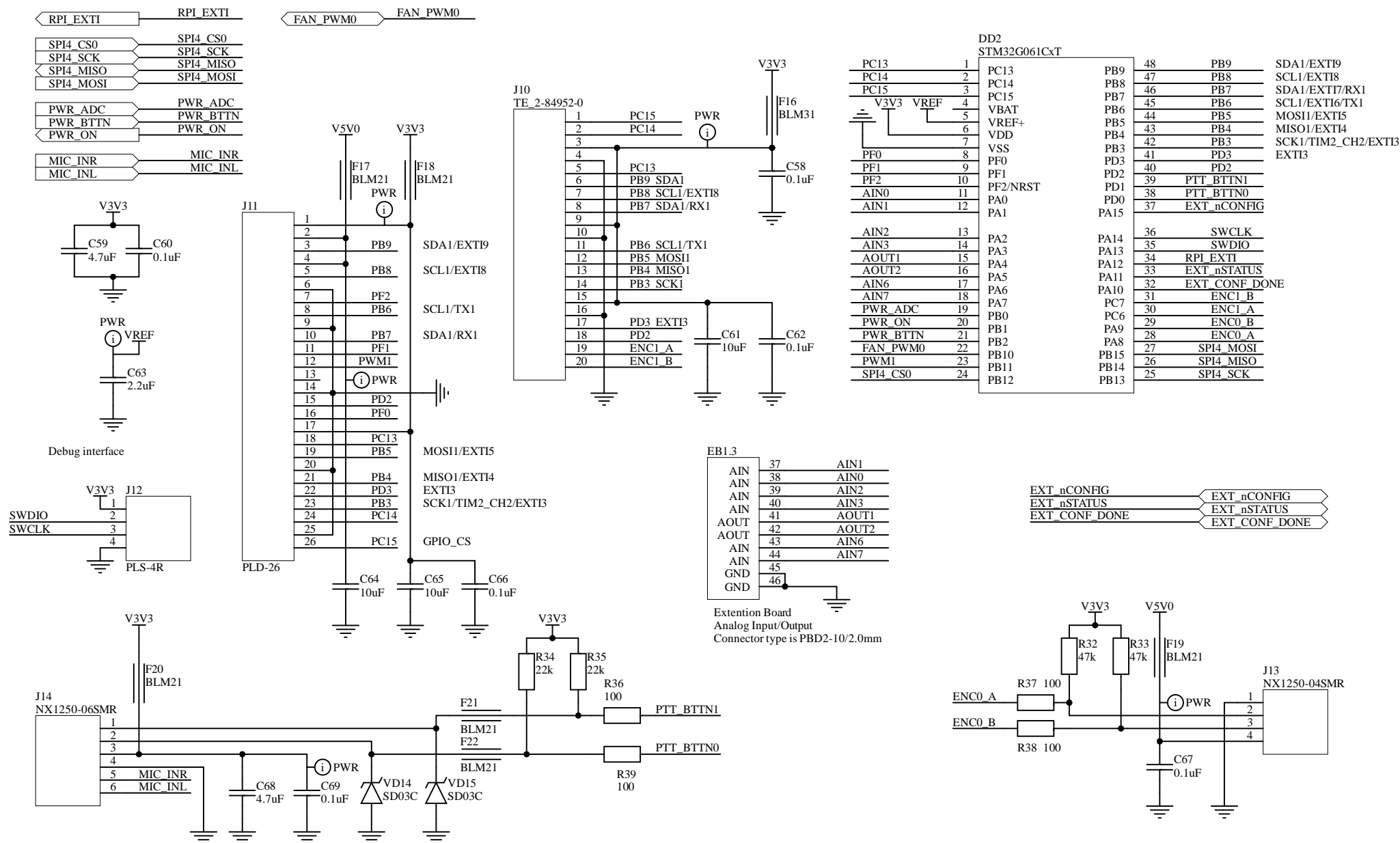
C

C

D

D





Comment	Description	Designator	Footprint	LibRef	Quantity
1uF	Capacitor 2x1.25 mm	C1, C2, C3, C8	CAPC2013X100N	Cap0805	4
1nF	Capacitor 2x1.25 mm	C4, C5	CAPC2013X100N	Cap0805	2
10uF	Capacitor 2x1.25 mm	C6, C18, C23, C32, C42, C45, C52, C53, C54, C61, C64, C65	CAPC2013X100N	Cap0805	12
0.1uF	Capacitor 2x1.25 mm	C7, C10, C11, C13, C17, C19, C20, C21, C26, C28, C31, C33, C35, C37, C40, C43, C46, C48, C50, C56, C57, C58, C60, C62, C66, C67, C69	CAPC2013X100N	Cap0805	27
100uF	TECAP 100/20V E 10	C9, C22, C55	CAPMP7343X310N	CapPolarized	3
22uF	Capacitor 2x1.25 mm	C12, C16, C30, C39	CAPC2013X100N	Cap0805	4
47uF	Capacitor 2x1.25 mm	C14, C15	CAPC2013X100N	Cap0805	2
0.47uF	Capacitor 2x1.25 mm	C24, C25	CAPC2013X100N	Cap0805	2
10uF	Capacitor 3.2x1.6 mm	C27, C36, C47	CAPC3216X125N	Cap1206	3
10nF	Capacitor 2x1.25 mm	C29, C38, C41, C44, C49, C51	CAPC2013X100N	Cap0805	6
100uF	TECAP 100/20V E 10	C34	CAPMP7343X430N	CapPolarized	1
4.7uF	Capacitor 2x1.25 mm	C59, C68	CAPC2013X100N	Cap0805	2
2.2uF	Capacitor 2x1.25 mm	C63	CAPC2013X100N	Cap0805	1
LM4871MX/NOPB	3W Audio Power Amplifier with Shutdown Mode	DA1	SOIC127P600X175-8N	LM4871MX/NOPB	1
TLV62130	TLV62130x 3-V to 17-V 3-A Step-Down Converter In 3x3 QFN Package	DA2, DA3, DA4	QFN50P300X300X80-17N-5165	TLV62130	3
TLV320AIC3204	TLV320AIC3204 Ultra Low Power Stereo Audio Codec	DD1	QFN50P500X500X100-33N-5345	TLV320AIC3204	1
STM32G061CxT	STM32G061CxT LQFP48	DD2	OFF50P900X900X160-48N	STM32G061CxT	1
UdaISDR Radio Unit	Extention Board connectors	EB1	ExtentionBoard	ExtentionBoard	1
BLM21	Ferrite Beads 0805	F1, F2, F4, F5, F6, F8, F9, F10, F11, F17, F18, F19, F20, F21, F22	RESC2013X64N	BLM21	15
BLM31	Ferrite Beads 1206	F3, F7, F12, F13, F14, F15, F16	CAPC3216X125N	BLM31	7
SI-43516-SMT	3.50mm, 0.141, 1/8, Mini Plug, - Headphone Phone Jack Stereo, 4 Conductor, TRRS, Connector Solder	J1, J3, J4	CUI_SI-43516-SMT	SI-43516-SMT	3
NX1250-025MR		J2	MOLEX_530480210	CONNECTOR-2	1
PLS-2R		J5	MOLEX_530480210	CONNECTOR-2	1
PJ-047BH	2.5 x 6.0 mm, 5.0 A, Horizontal, Through Hole, Shielded, Dc Power Jack Connector	J6	CUI_PJ-047BH	PJ-047BH	1
MX-5269-02A		J7	MOLEX_22057045	CONNECTOR-4	1
PLS-2R		J8	PLS-2R	CONNECTOR-2	1
RPI-4-HEADER-40	PBD-40, 2.54, h = 8.4	J9	Raspberry PI 4 Model B - SMD	RPI-4-HEADER-40	1
TE-2-84952-0		J10	TE_2-84952-0	CONNECTOR-20	1
PLD-26		J11	PLD-26-MIRRORED	CONNECTOR-26	1
PLS-4R		J12	PLS-4R	CONNECTOR-4	1
NX1250-045MR		J13	MOLEX_530480410	CONNECTOR-4	1
NX1250-065MR		J14	MOLEX_530480610	CONNECTOR-6	1
IHLPI1212BZEV2R2M5 A	IHLPI1212BZEV2R2	L1	IHLPI1212BZ	Inductor	1
IHLPI1212BZEV2R2M1 1	IHLPI1212BZEV2R2	L2, L3	IHLPI1212BZ	Inductor	2
100		R1, R3, R36, R37, R38, R39	RESC2013X64N	Res0805	6
20k		R2, R4	RESC2013X64N	Res0805	2
4.7k		R5	RESC2013X64N	Res0805	1
2.7k		R6	RESC2013X64N	Res0805	1
10k		R7, R8, R23, R27	RESC2013X64N	Res0805	4
47k		R9, R10, R11, R32, R33	RESC2013X64N	Res0805	5
1k		R12, R13, R14, R15	RESC2013X64N	Res0805	4
430k		R16	RESC2013X64N	Res0805	1
2.2k		R17	RESC2013X64N	Res0805	1
12k		R18	RESC2013X64N	Res0805	1
680k		R19	RESC2013X64N	Res0805	1
130k		R20	RESC2013X64N	Res0805	1
33k		R21	RESC2013X64N	Res0805	1
750k		R22	RESC2013X64N	Res0805	1
240k		R24	RESC2013X64N	Res0805	1
100k		R25, R30	RESC2013X64N	Res0805	2
15k		R26	RESC2013X64N	Res0805	1
75k		R28	RESC2013X64N	Res0805	1
470k		R29	RESC2013X64N	Res0805	1
150k		R31	RESC2013X64N	Res0805	1
22k		R34, R35	RESC2013X64N	Res0805	2
SD03C	BZV55-C4V3.115	VD1, VD2, VD3, VD4, VD5, VD6, VD7, VD8, VD9, VD14, VD15	SOD2512X110N	TVS DIODE	11
BAV23C	BAT54CL	VD10	SOT95P229X119-3N	DIODE-2-1A-3C-3C-2A	1
BZT52C12		VD11	SOD-123FL	DIODE ZENER	1
LED		VD12	LED_KINGBRIGHT_KP H-1608SURCK	LED	1
BAT54CL	BAT54CL	VD13	SOT95P229X119-3N	DIODE-2-1A-3C-3C-2A	1
IHLML2402TRPBF		VT1	SOT95P229X119-3N	N-MOSFET 1G 2S 3D	1
AO4425	38V P-Channel MOSFET	VT2	SOIC127P600X175-8N	AO4425	1
NX7002AK		VT3	SOT95P229X119-3N	N-MOSFET 1G 2S 3D	1